

# DB2 Authorization and Setup Guide



# Table of Contents

Purpose .....	3
Before You Begin .....	3
Locate or Start the DB2 Monitor .....	3
The DB2 Monitor Pop-Up Menu .....	3
Server Setup.....	4
Set/Edit Account Information: .....	4
Module/Program Authorization: .....	4
Set Local Database Locations: .....	4
Set DDMS Database Locations: .....	4
Setting Account Information.....	5
Module/Program Authorization: .....	6
Authorized Status:.....	6
Evaluation Status: .....	6
Expired Status: .....	6
Authorizing a Module:.....	7
Authorization Code:.....	7
Reset Code: .....	7
Next Steps .....	7

## Purpose

This document describes the authorization and set up of the DB2 product. You only need to complete these instructions if you have installed the DB2 product.

## Before You Begin

Make sure you have completed the common setup instructions and the DB2 server installation. You must complete these steps before you can setup and use DB2. You will need account and authorization codes to complete the DB2 setup. Contact Jack Duncan at 800-722-3615 extension 1 before you continue.

## Locate or Start the DB2 Monitor

If you re-booted your server as recommended, the DB2 monitor should load in the system tray and appear as a traffic light similar to the following:



If you did not re-start your computer, or the monitor did not start, choose Start – Programs – OPSsoftware – DB2 Server Monitor to launch the monitor.

## The DB2 Monitor Pop-Up Menu

Right click on the DB2 monitor traffic light icon. A pop-up menu will appear:



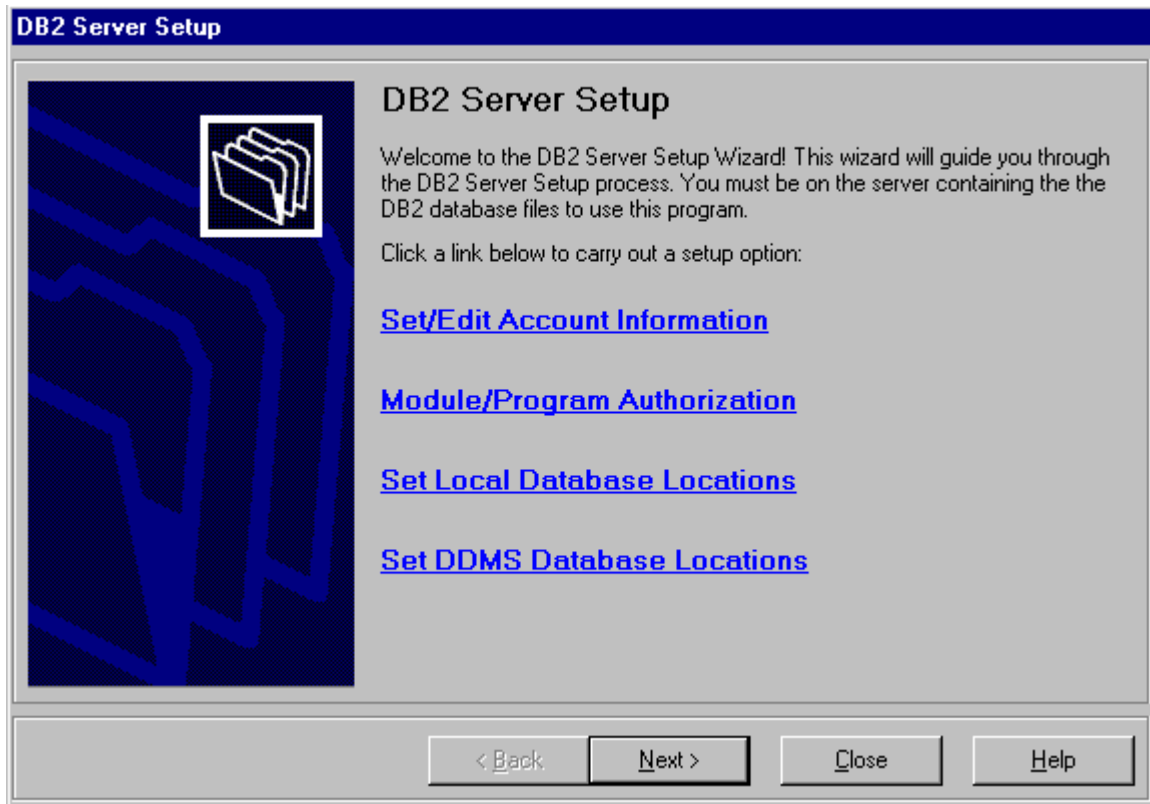
**Important!** Performing any of the Pop-Up menu actions will prevent the DB2 monitor from carrying out scheduled jobs. Be sure to restore, or re-start, the DB2 monitor when finished.

Choose the Menu item from this pop-up menu to display the server menu.

Click the Server Setup link from the DB2 server menu screen.

## Server Setup

The server setup main screen:



### ***Set/Edit Account Information:***

This function allows you to enter required account information before you can use DB2.

### ***Module/Program Authorization:***

This function authorizes the individual modules and programs contained in DB2. Some programs and modules must be authorized before they can be used.

### ***Set Local Database Locations:***

This function sets the local (this computer) database location of your DB2 files. This is set during installation and should not be changed unless instructed by OPSoftware.

### ***Set DDMS Database Locations:***

This function sets the locations of your DDMS database files. If you completed the common setup instructions, then these locations should already be set. Only if you change mapped drives (never recommended) should you need to modify these settings.

## Setting Account Information

You must set the account information before you can use DB2. Contact Jack Duncan at 800-722-3615 extension 1 to obtain your account information.

**DB2 Account Setup**

Please verify the account and connection information below. If you need an account ID and password or help with the connection information, then please contact Jack Duncan at 800-722-3615 Extension 1. Do not leave this screen until you receive your account ID and password!

Server Name/IP: 209.187.161.119

Account ID:

Password:

Connection Timeout: 30

Command Timeout: 30

Network Library: DBMSSOCLN

< Back   Next >   Cancel   Help

The Server Name/IP, Connection Timeout, Command Timeout, and Network Library items should have been set by the installation program and should not be changed.

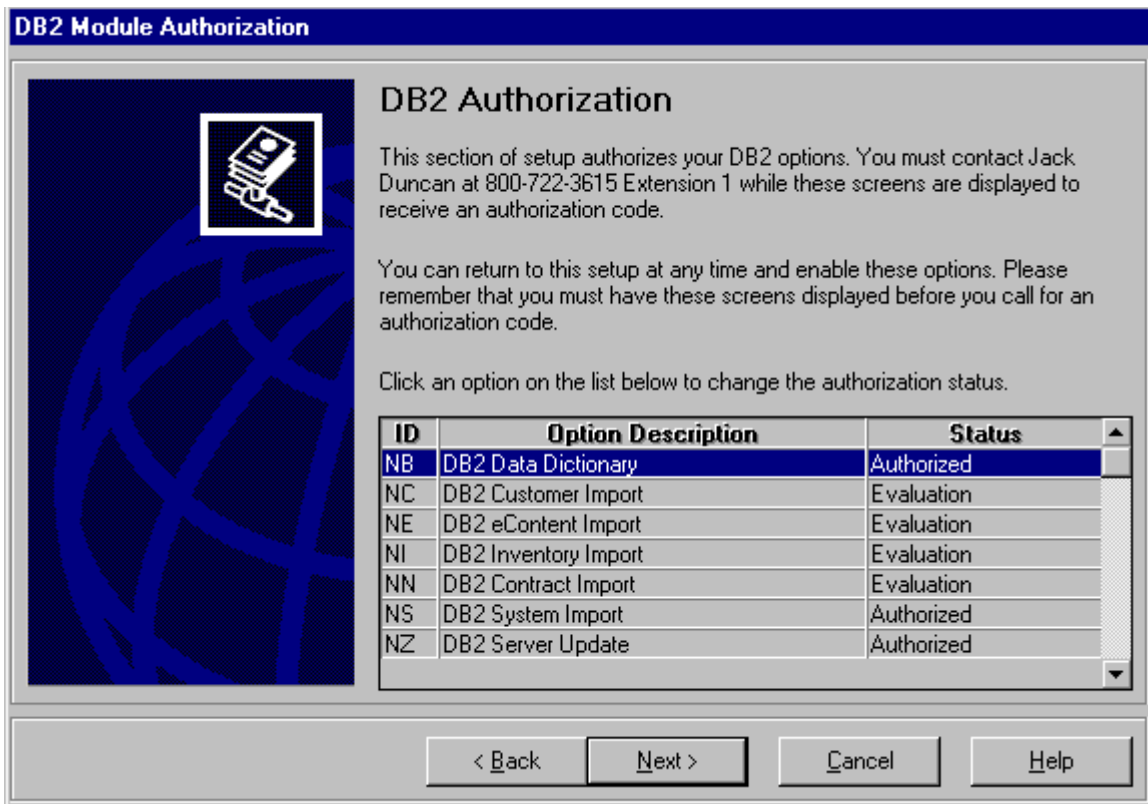
Enter the Account ID and Password you received in the boxes and then click Next.

## Module/Program Authorization:

Some programs and modules in DB2 require authorization before they can be used.

Contact Jack Duncan at 800-722-3615 extension 1 before you attempt to authorize your DB2 installation. You must have these screens displayed at the time you receive your authorization codes.

Click the Module/Program Authorization link from the main Server Setup menu to display the DB2 Authorization screen:



Some modules are always authorized, and some may require authorization. This status screen will display all modules and the current status.

### ***Authorized Status:***

This status indicates that the module is permanently authorized and can be used at any time now or in the future.

### ***Evaluation Status:***

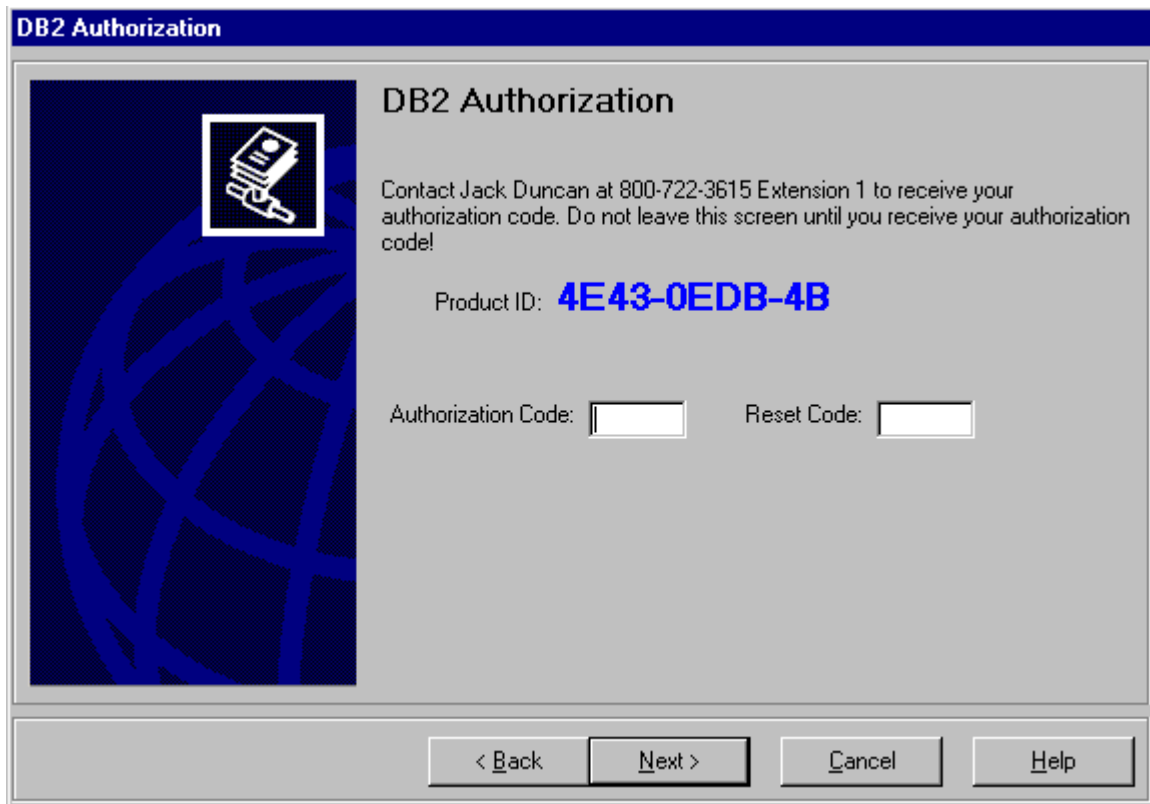
This status indicates that the module is operating in evaluation mode. The module can be used now, but will expire and stop working some time in the future.

### ***Expired Status:***

This status indicates that the module has expired. The module will not work until you enter a reset code or a permanent authorization code.

## Authorizing a Module:

Click the module you want to authorize from the main authorization screen and then click next. The following authorization entry screen will be displayed:



**DB2 Authorization**

DB2 Authorization

Contact Jack Duncan at 800-722-3615 Extension 1 to receive your authorization code. Do not leave this screen until you receive your authorization code!

Product ID: **4E43-0EDB-4B**

Authorization Code:  Reset Code:

< Back Next > Cancel Help

You must have this screen displayed, with the Product ID shown, when you call for an authorization code!

### **Authorization Code:**

Entering an authorization code will permanently authorize the module. Use this box when you decide to purchase a module.

### **Reset Code:**

Entering a reset code will restore a module to the evaluation status and allow the module to operate for a period of time. The module will eventually expire and another code must be entered before the module can be used again.

**Important!** The authorization and reset codes are different! You cannot request a reset code and then use this code in the authorization box.

## Next Steps

Decide which modules you want to purchase and which modules you want to evaluate. Contact Jack Duncan at 800-722-3615 extension 1 to receive your codes. Then continue by reading the remaining DB2 guides: DB2 Database Processor Guide, DB2 Scheduler Guide, DB2 Server Update Guide, DB2 Data Dictionary Guide, and DB2 eContent Import Guide.