

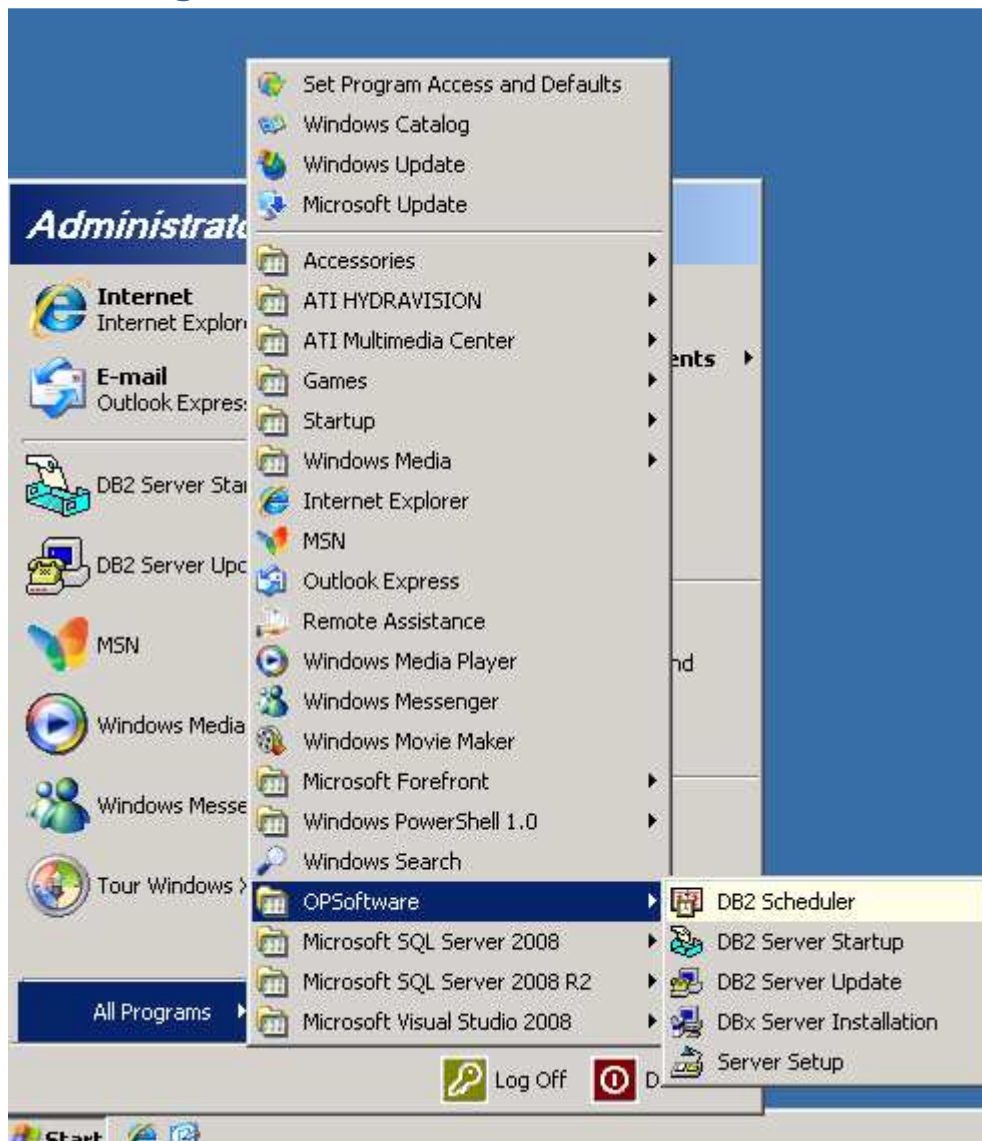
Using SQL Databases in DB2

Before You Begin

You must install the latest release of DBx before performing these actions.

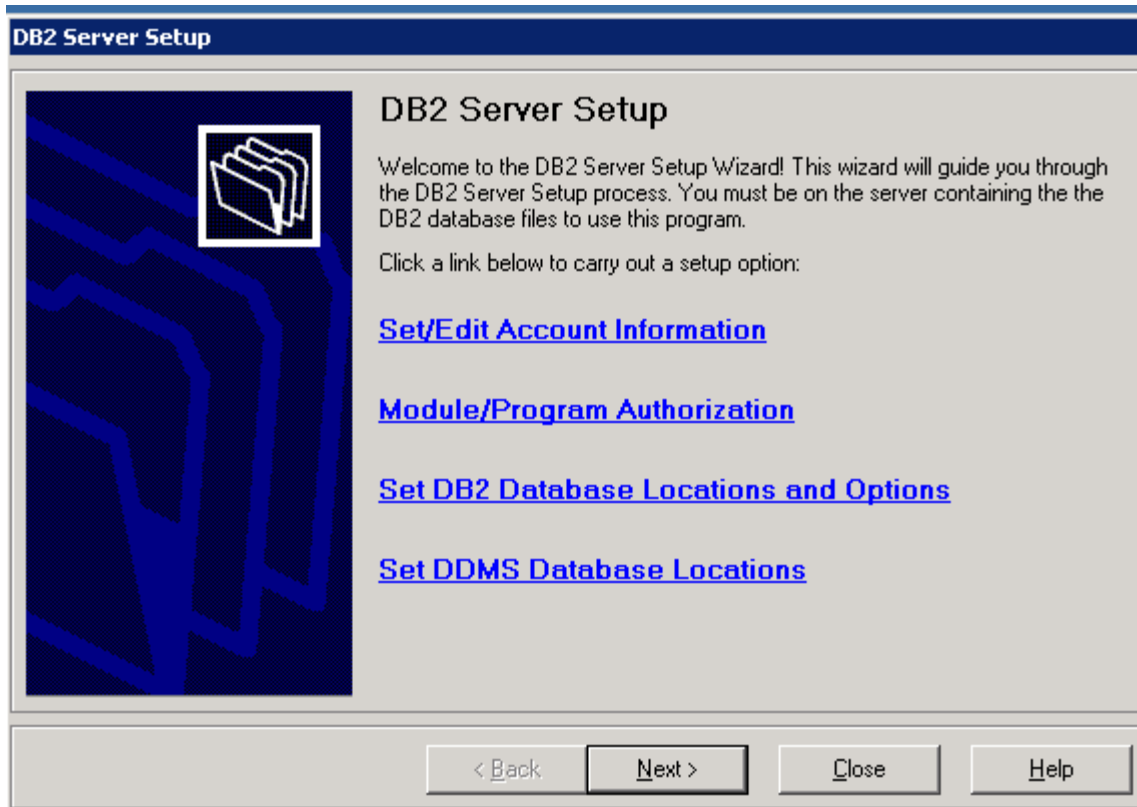
Make sure that the DB2 monitor is not running in the system tray.

Converting From DB2 to DBx



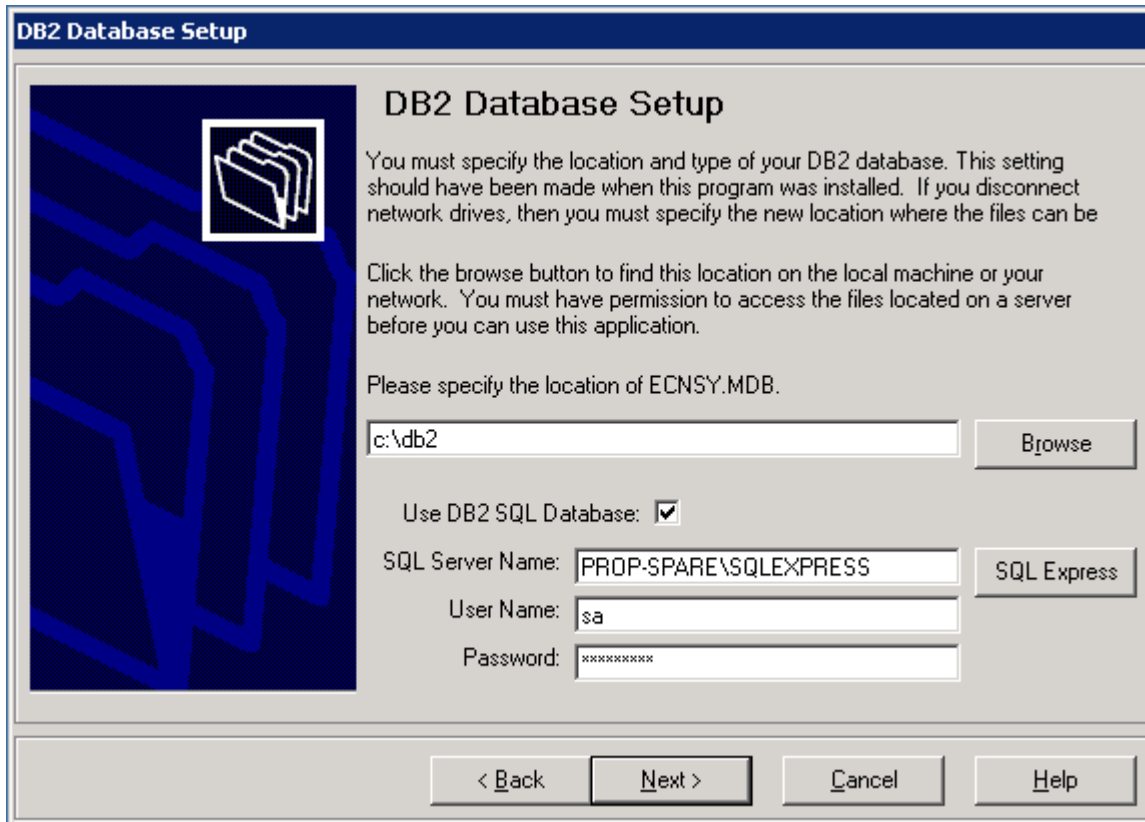
Choose Start – All Programs – Server Setup to modify your DB2 configuration.

DB2 Server Setup



Click the Set DB2 Database Locations and Options link.

Switch to DBx



The screenshot shows the "DB2 Database Setup" dialog box. It features a blue header bar with the title "DB2 Database Setup". On the left, there is a graphic of a folder icon. The main area contains the following text and controls:

DB2 Database Setup

You must specify the location and type of your DB2 database. This setting should have been made when this program was installed. If you disconnect network drives, then you must specify the new location where the files can be

Click the browse button to find this location on the local machine or your network. You must have permission to access the files located on a server before you can use this application.

Please specify the location of ECNSY.MDB.

c:\db2

Use DB2 SQL Database:

SQL Server Name: PROP-SPARE\SQLEXPRESS

User Name: sa

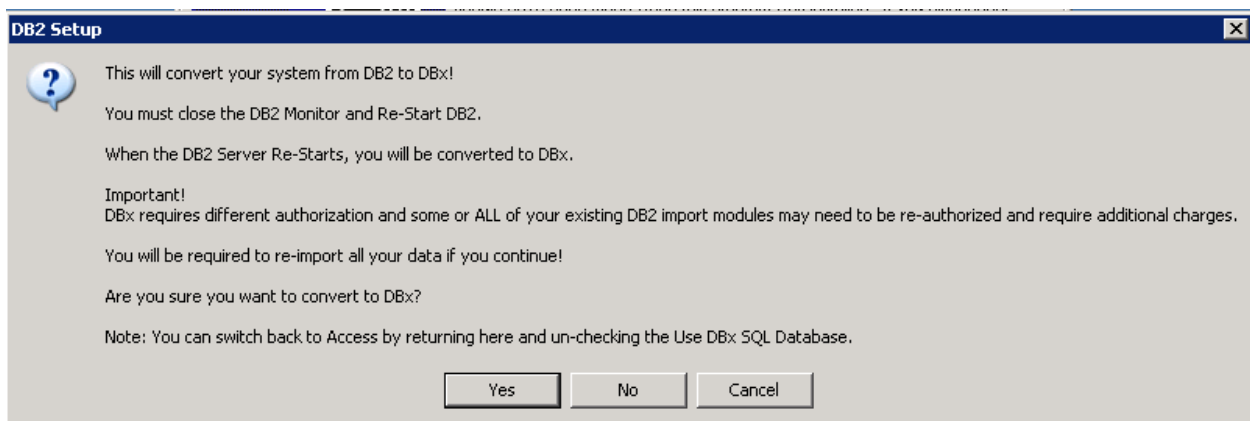
Password: *****

< Back

Check the "Use DB2 SQL Database" checkbox. The SQL Server Name should automatically default to the SQL Express default of: "Computer Name\SQLEXPRESS. Click the SQL Express Button to set the SQL Server Name to the default.

You must also enter your 'sa' login and password here. Make sure you enter the correct password and click the Next Button to continue.

Conversion from DB2 to DBx



The screenshot shows the "DB2 Setup" dialog box with a question mark icon. The text inside reads:

This will convert your system from DB2 to DBx!

You must close the DB2 Monitor and Re-Start DB2.

When the DB2 Server Re-Starts, you will be converted to DBx.

Important!
DBx requires different authorization and some or ALL of your existing DB2 import modules may need to be re-authorized and require additional charges.

You will be required to re-import all your data if you continue!

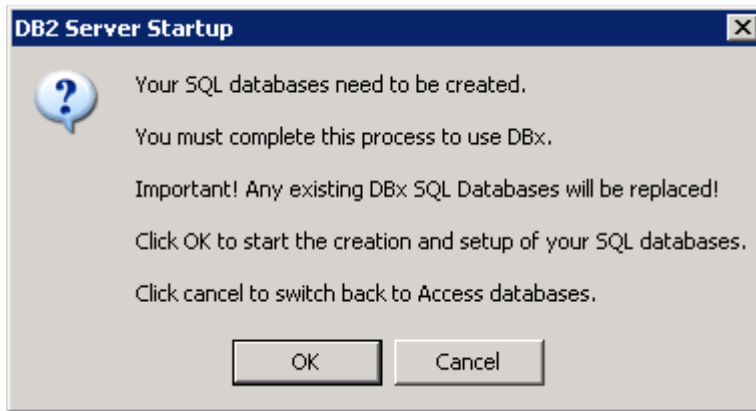
Are you sure you want to convert to DBx?

Note: You can switch back to Access by returning here and un-checking the Use DBx SQL Database.

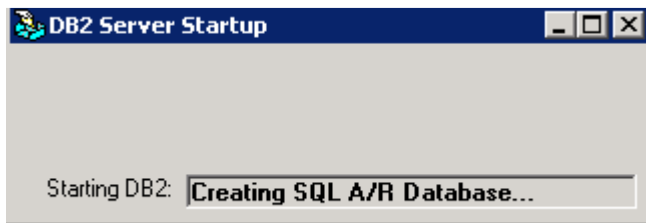
You will receive this Conversion from DB2 to DBx message. Click Yes to continue.

DB2 Server Startup Conversion

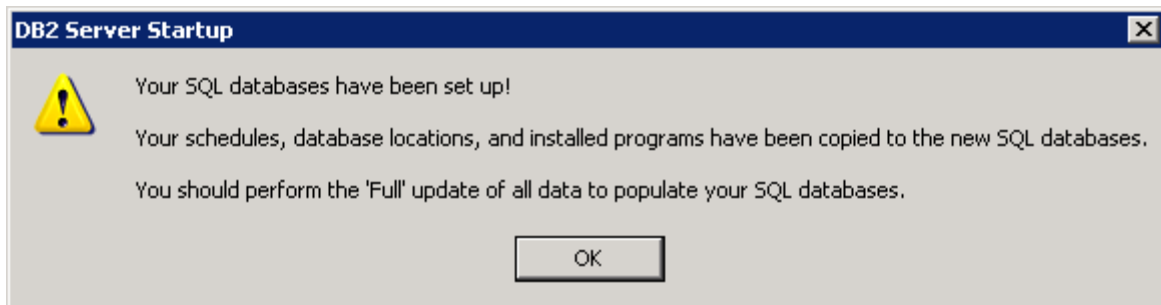
You need to stop and then restart the DB2 system monitor. When the monitor starts, you will receive the following message box:



Click the OK button to continue.

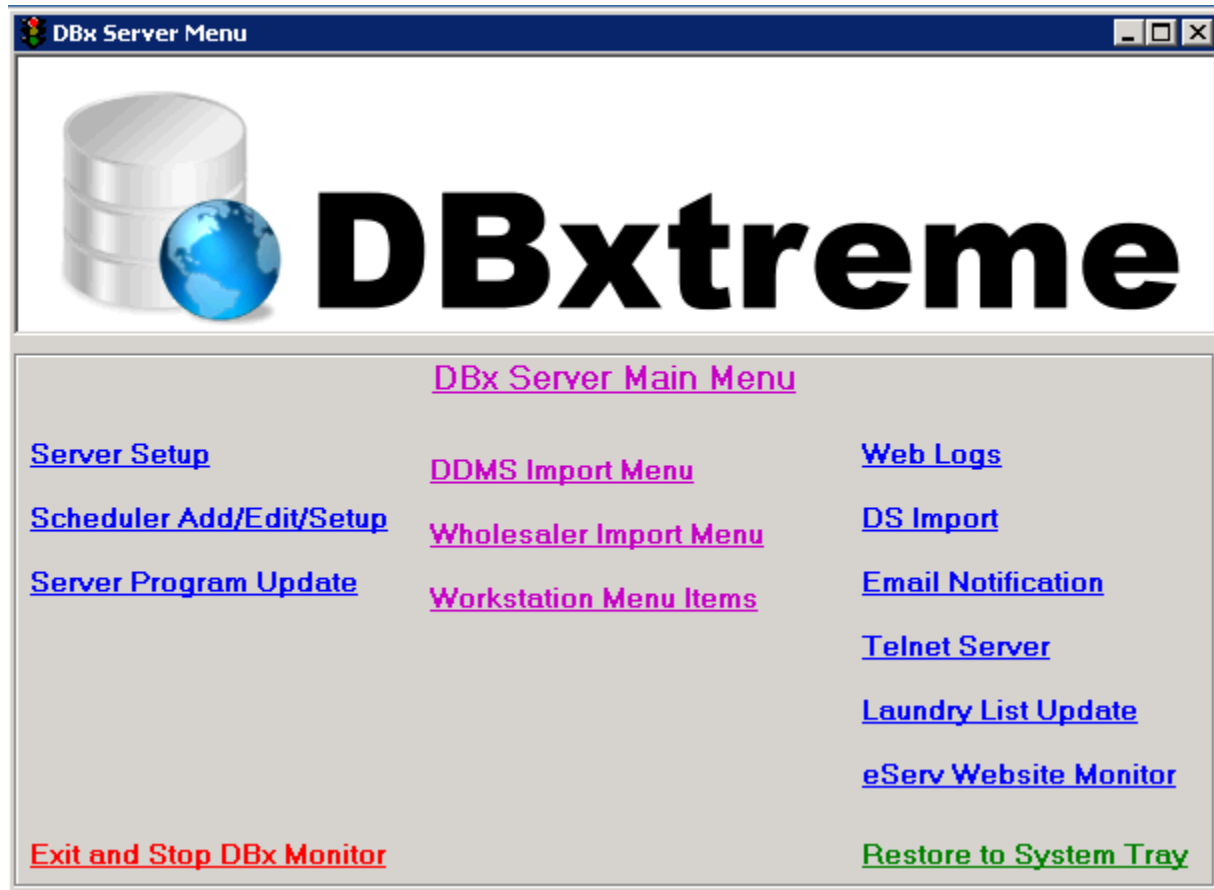


DBx will now create your SQL databases on the selected server. This can take a few minutes while the databases are being created.



Once the database creation is completed, the above confirmation message will be displayed.

DBx Menu



When the new DBx menu is displayed, you should re-import your data. This is the initial population of your SQL databases.

Note: The initial population of an SQL database can take a long time.

You know you are using the new DBx system by the logo and name change on the main menu.

From an operational standpoint, DBx operates just like DB2 except it uses the SQL databases instead of the Access databases.

DBx Modules



DBx modules have also changed in appearance only. You will see the new DBx logo on those modules using the SQL databases.

Next Steps

Import your data into the new SQL databases using the familiar DBx modules.

Convert your existing DB2 reports to use the new SQL databases. See the separate Converting Access Reports to SQL guide for detailed steps on this process.